

Henry Pratt Ballcentric Plug Valve



Operation and Maintenance Manual

Job Name: _____

Contractor: _____

Date: _____

Henry Pratt Ballcentric Plug Valve

SAFETY MESSAGES

All safety messages in the instructions are flagged with an exclamation symbol and the word “Warning”. These messages indicate procedures that must be followed exactly to avoid equipment damage, physical injury, or death. Safety labels on the product indicate hazards that can cause equipment damage, physical injury, or death.



WARNING

Personnel involved in the installation or maintenance of valves should be constantly alert to potential emission of pipeline material and take appropriate safety precautions. Always wear suitable protection when dealing with hazardous pipeline materials.

PARTS

Order parts from your local Henry Pratt sales representative or directly from Henry Pratt Company. When ordering parts, please include the serial number located on the valve tag.

WARRANTY ISSUE

Seller warrants that, at its option, it will repair, replace, or refund the unit purchase price of any products which are non-conforming due to Seller’s material or workmanship during the warranty period. The warranty period shall be twelve (12) months for parts and eighteen (18) months for all other goods after date of shipment. This shall be Buyer’s sole remedy. In order to maintain this product warranty, Buyer must give written notice to Seller’s Field Service Supervisor prior to any work being performed.

IN CONSIDERATION OF THE FOREGOING, SELLER EXCLUDES ALL OTHER EXPRESS OR IMPLIED WARRANTIES, INCLUDING BUT NOT LIMITED TO MERCHANTABILITY AND FITNESS FOR A PARTICULAR PURPOSE.

Seller does not warrant water operated metallic cylinders against damage caused by corrosion, electrolysis or mineral deposits. In no event shall warranty include valve removal or reinstallation.



WARNING

Read all applicable directions and instructions prior to any maintenance, troubleshooting or installation

Table of Contents

FUNCTIONAL DESCRIPTION	4
INSTALLATION	5
OPERATION	
<i>Wrench Operated Valve</i>	6
<i>Gear Operated Valve</i>	8
<i>Actuated Valve</i>	9
MAINTENANCE	10
TROUBLESHOOTING	
<i>Wrench Operated Valve</i>	11
<i>Gear Operated Valve</i>	11
<i>Actuated Valve</i>	12
CONTACTING PRATT	13
PRODUCT DRAWINGS	14

Henry Pratt Ballcentric Plug Valve

FUNCTIONAL DESCRIPTION

Plug valves are designed with eccentric rubber disc seating surfaces. The plug rotates 1/4 turn to provide shutoff in pipes. The eccentric seating action provides for tighter shutoff as the actuator is adjusted to provide for more rotation. The valve can be adjusted to a maximum of 10 degrees over travel. The valves can be used to regulate flow rate by positioning the plug between 15 and 90 degrees open

Manually operated plug valves are powered with one of the following: 2" direct nut, lever handle or gear actuators, which convert multiple handwheel, chainwheel, or nut input turns into 1/4 turn valve operation. The travel of the valve plug is limited by physical stops in the torque collar for wrench operated valves.



WARNING

CAUTION: Forcing the handwheel, chainwheel, or nut against the stops will not provide tighter shutoff of the valve and may damage the actuator. Only actuator adjustments will affect valve shutoff.

Motor operated valves are powered with gear actuators, which convert multiple motor input turns into 1/4 turn valve operation. The travel of the valve plug is limited by limit switches in the motor housing and physical stop in the actuator housing. Valve shutoff is affected by limit switch and physical stop settings.



WARNING

CAUTION: Improperly set limit switches and/or physical stops may damage the motor and/or actuator.

Hydraulically operated valves are powered with a gear box and double acting cylinder. The linear stroke of the cylinder is converted to 1/4 turns operation by the gear box. Auxiliary controls are provided to direct hydraulic power to the cylinder and to control the operating speed of the cylinder.

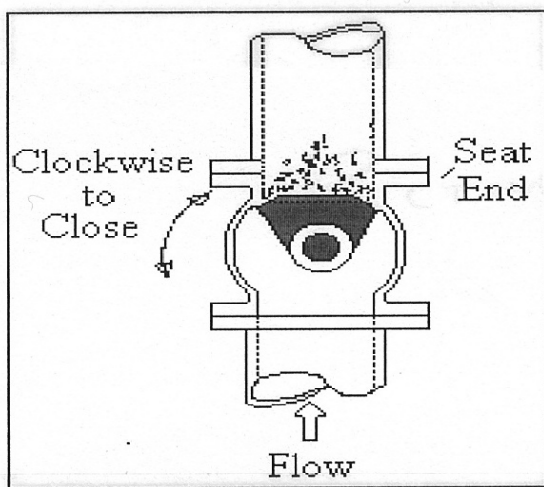
Henry Pratt Ballcentric Plug Valve

INSTALLATION

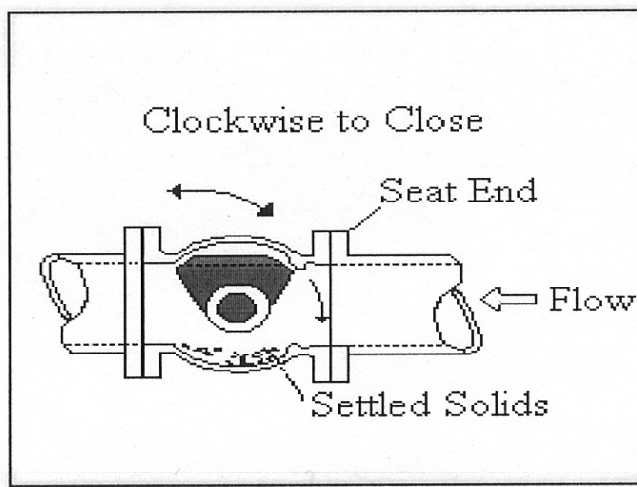
When installing the plug valves, the seat end should be noted. The seat end of the valve is cast in raised letters on the appropriate flange of the valve. Generally, straightway valves should be installed with the highest pressure applied from the opposite end from the seat. This will tend to push the plug into the seat. On pump discharge installations the seat end should be towards the pump.

In cases where shut-off is required in both directions, the valve should be installed so that the highest differential pressure at shut-off is opposite the seat end.

When the service is of a clogging type, with suspended solids likely to build up in the valve body, it is recommended that the valve be installed with the media entering the seat end first. In extreme cases, the valve should be installed with the plug horizontal and rotating upward into the top portion of the valve body cavity to open.



Vertical Pipeline



Horizontal Pipeline

Class 125 flanged end valves have ANSI B16.1 flat faced 125/150 flanges. Standard ANSI B16.21 flanges and gaskets should be used to install the valves in the pipeline. Certain size valves utilize tapped holes on the top and bottom of the flange where a backing nut is not possible. Please check specific drawings for detailed information on sizes and quantities of hexagon head screws required on these valves.

Prior to installing valves, they should be cycled open and closed several times to ensure they are in good working order and have not been damaged during shipment or storage.

Henry Pratt Ballcentric Plug Valve

OPERATION

Wrench Operated Plug Valves

Wrench operated eccentric plug valves close by turning the valve 90 degrees clockwise. All wrench operated eccentric valves are equipped with a multifunction device referred to here as a torque collar. This device serves as:

1. Wrench Adapter – 2" Square
2. Position Indicator
3. Open Memory Stop
4. Closed Memory Stop
5. Running Torque Adjustment

Position Indicator: The top of the plug has an indicator plate to show the approximate plug position. Cast onto the torque collar is an indicator mark which corresponds to a graduated scale cast on the bonnet of the valve. This scale is divided into 15 degree lines and indicates the exact valve opening from full open to full closed.

Open Memory Stop: The torque collar also incorporates an open memory stop feature. The plug can be set by tightening the open memory stop adjustment bolt after the correct flow is achieved. The valve can then be closed for maintenance and reopened to the proper position without resetting the flow.

Closed Memory Stop: The closed memory stop is provided to allow for adjustment to compensate for wear of either the plug coating or the seat. The closed stop is pre-set at the factory and should not require readjustment unless wear occurs.

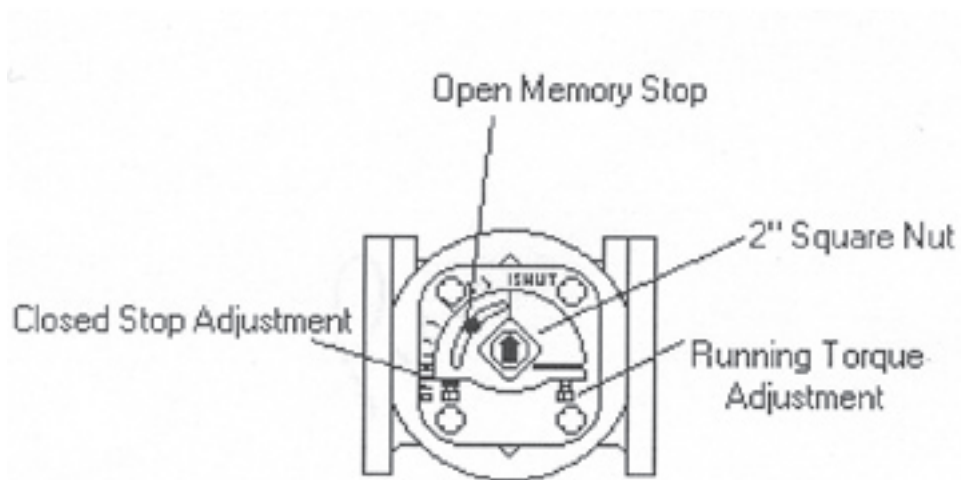
To adjust the plug for excess plug or seat wear simply rotate the closed stop two turns counter-clockwise then rotate the plug (clockwise) further into the seat and check the flow. Should this movement fail to shut off the flow repeat the above step. Afterward re-set the lock nut to prevent the position from being altered.

Running Torque Adjustment: The nature of eccentric plug valves "camming" action eliminates the majority of the torque prior to seating. To prevent the plug from creeping open or slamming closed, the torque collar maintains a constant drag on the shoulder of the valve bonnet. This component is factory adjusted. However, once the valve has been installed, it is recommended that the torque adjustment nut be further tightened to assure proper friction exists to prevent unwanted closure.

To prevent the plug from unnecessary movement, rotate the hex head bolt clockwise until there is a substantial drag on the plug but not so much as to prevent the movement of the plug with the supplied wrench.

Henry Pratt Ballcentric Plug Valve

Wrench Operated Valve With Torque Collar



Henry Pratt Ballcentric Plug Valve

Gear Operated Plug Valves

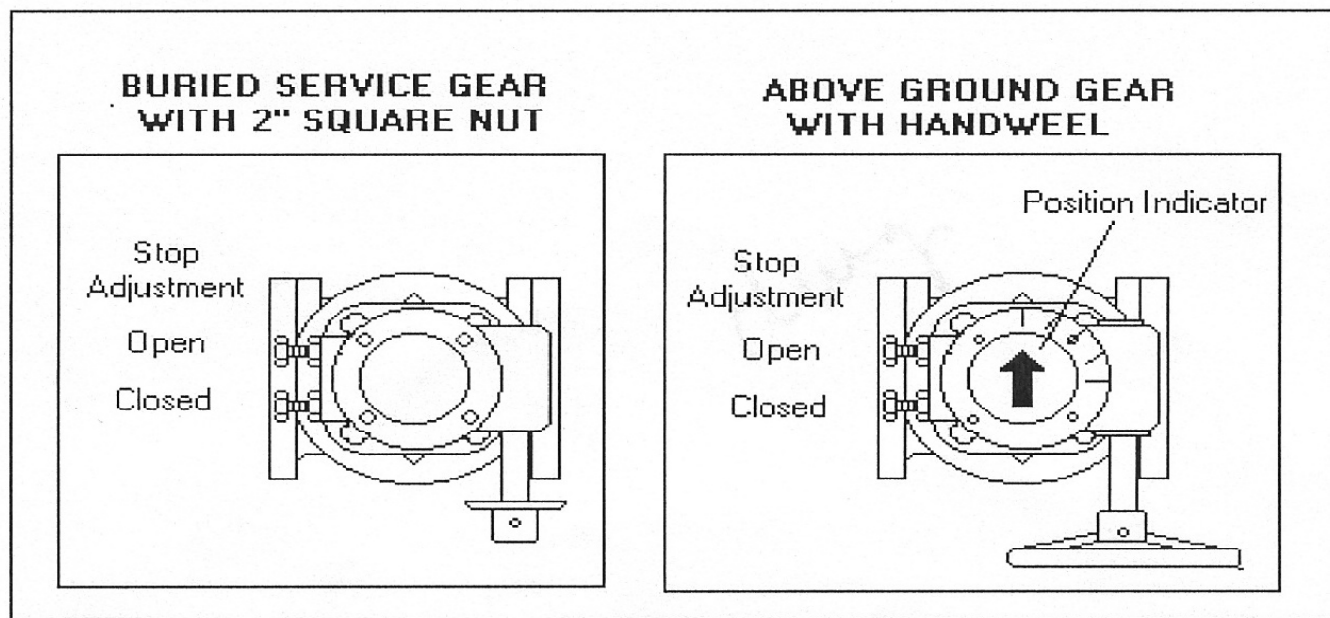
Gear operated eccentric valves close by turning the gear input shaft clockwise until closed.

Position Indicator (above ground units only): The top of the gear operator has an indicator plate to show the plug position. This scale, cast onto the gear housing, is divided into 15 degree lines and indicates the exact valve opening from full open to full closed. Buried service units are totally enclosed and sealed for use below grade.

Open and Closed Memory Stops: The closed memory stop is provided to allow for adjustment to compensate for wear of either the plug coating or the seat. The closed stop is pre-set at the factory and should not require readjustment unless wear occurs.

To adjust the plug for excess plug or seat wear simply rotate the closed stop two turns counterclockwise then rotate the handwheel or nut (clockwise) to move the plug further into the seat and check the flow. Should movement fail to shut off the flow repeat the above step. Afterward re-set the lock nut to prevent the position from being altered.

Gear Operated Valve





Henry Pratt Ballcentric Plug Valve

Actuated Plug Valves

Described below are the operating instructions for an eccentric plug valve equipped with an electric motor actuator. General arrangement drawings are provided in conjunction with this manual to illustrate the fitup and installation of the valve and wiring of the motor. Specific wiring details are contained in the electric motor actuator manual. As with any plug valve, the actuator will cause the valve plug to rotate through $\frac{1}{4}$ turn to open or close the valve.

The output motion of the actuator is limited to about 100 degrees of output rotation by mechanical stops in the gearing. These are factory set and should not need adjustment. The actual positioning of the valve plug will be done by limit switches in the motor actuator. The switches are also set at the factory, but adjustment is sometimes required if the motor unit is installed on a separate mounting base or floorstand. Detailed procedures are given in the motor manual if adjustment is needed for the mechanical stops or the limit switches. The wiring and power requirements are noted on the wiring diagrams included with this instruction manual.

Henry Pratt Ballcentric Plug Valve

MAINTENANCE

The eccentric valve is designed and manufactured to be a long life valve under normal circumstances. It does not require any routine maintenance. Cycling the valve from full open to full closed on an annual basis will increase the life of the valve and operator components. However, if maintenance is required due to unusual wear or service conditions, the following procedure should be followed:



WARNING

CAUTION: *Valve should be depressurized for all maintenance activities*

DISASSEMBLY PROCEDURE

Body: The plug valve is a top entry valve; therefore the body can remain in line during this operation.

Gear Operated Valves: Remove the bolts holding the gear operator housing cover in place. Remove the housing cover and the internal bolts holding the gear operator to the valve body. Remove the gear operator and set aside.

Wrench Operated Valves: Remove the star washer fastening the torque collar to the plug stem. Remove the torque collar and set aside.

With the valve de-pressurized, remove the hexagonal head cap screws that hold the bonnet to the valve body. Remove the bonnet, leaving the plug in the body. At this point, the plug, PTFE thrust washers, journal bearings and bonnet stem seals are accessible and can be removed and replaced.

Reverse the above process for reassembling the valve only. For stem seal replacement follow procedure below.

Stem Seals: With the valve de-pressurized, using internal snap ring pliers, remove the snap ring and thrust washer. The “U” cup seals can now be pried out of the seal cavity. To replace, reverse the above process.

“U” Cup Seals: To replace “U” cup seals on actuated eccentric plug valves, depressurize the valve, remove the actuator, and remove internal bolts fastening the actuator to the valve body. Remove the actuator and set aside. Remove the internal snap ring using snap ring pliers. Remove thrust washer. The “U” cup seals are now visible. Using a screwdriver, pry out the old seals. Apply a small amount of silicone or grease to the new “U” cup seals. This will help them slide in the packing cavity. Put a piece of shim stock into the cavity and put the “U” cup over it. Slide the “U” cup over the stem with shim stock against the stem. This will let any trapped air out of the packing cavity. Now, using two screwdrivers, coax the outer lip of the “U” cup into the cavity while pressing down on the top of the “U” cup with the other screwdriver (see Figure A). Continue to do this all the way around until the “U” cup is at the bottom of the packing cavity.

Repeat the procedure with the second “U” cup, and replace the thrust washer and snap ring. Now you can remount the actuator on the valve.

Henry Pratt Ballcentric Plug Valve

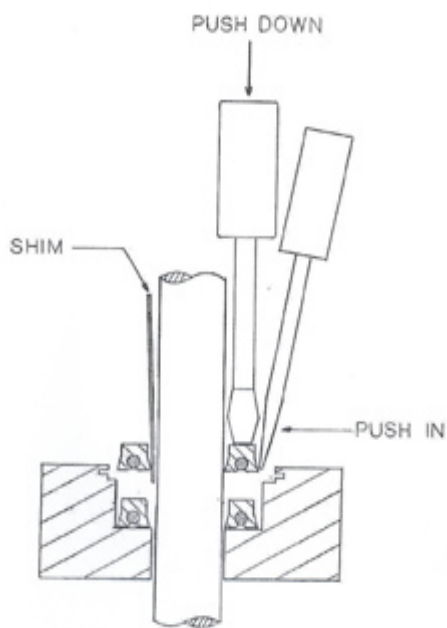


Figure A - "U" Cup Seals

Henry Pratt Ballcentric Plug Valve

TROUBLESHOOTING

Wrench Operated Plug Valves

Problem	Possible Cause	Remedies
Valve will not open	<ul style="list-style-type: none"> broken or misadjusted torque collar obstruction in line excessive line pressure elastomer damage 	<ul style="list-style-type: none"> adjust or replace torque collar remove obstruction reduce pressure replace plug
Valve will not close	<ul style="list-style-type: none"> broken or misadjusted torque collar obstruction in line excessive line pressure elastomer damage 	<ul style="list-style-type: none"> adjust or replace torque collar remove obstruction reduce pressure replace plug
Valve will not shutoff flow	<ul style="list-style-type: none"> improper stop adjustment obstruction in line excessive line pressure elastomer damage 	<ul style="list-style-type: none"> adjust closed stop remove obstruction reduce pressure replace plug
Valve leaks at plug stem	<ul style="list-style-type: none"> damaged "U" cup seal 	<ul style="list-style-type: none"> replace "U" cups

Gear Operated Plug Valves

Problem	Possible Cause	Remedies
Valve will not open	<ul style="list-style-type: none"> bent input shaft obstruction in line excessive line pressure elastomer damage 	<ul style="list-style-type: none"> replace worm shaft remove obstruction reduce pressure replace plug
Valve will not close	<ul style="list-style-type: none"> bent input shaft obstruction in line excessive line pressure elastomer damage 	<ul style="list-style-type: none"> replace worm shaft remove obstruction reduce pressure replace plug
Valve will not shutoff flow	<ul style="list-style-type: none"> improper stop adjustment obstruction in line excessive line pressure elastomer damage 	<ul style="list-style-type: none"> adjust closed stop remove obstruction reduce pressure replace plug
Valve leaks at plug stem	<ul style="list-style-type: none"> damaged "U" cup seal 	<ul style="list-style-type: none"> replace "U" cups

Henry Pratt Ballcentric Plug Valve

Actuated Plug Valves

Problem	Possible Cause	Remedies
Valve will not close/ Valve will not open	<ul style="list-style-type: none"> • no power source • improper signal • burned out or impaired component 	<ul style="list-style-type: none"> • Check incoming power source and/or replace fuses • Check actuating signal sequence • Check and repair or replace motor or relay devices
Valve will not shut off flow	<ul style="list-style-type: none"> • Improperly set limit switch • Actuator torques out 	<ul style="list-style-type: none"> • Re-set limit switch • Check for obstructions in valve



Henry Pratt Ballcentric Plug Valve

HOW TO CONTACT PRATT

HOW TO ORDER PARTS:

To order parts, contact our Parts Department:

Write: - Henry Pratt Company
401 South Highland Avenue
Aurora, IL 60506-5563

Attn: Parts Manager

Call - (630) 844-4000

Fax - (630) 844-4191

Please include valve serial number and description of part requested.

HOW TO OBTAIN SERVICE:

To obtain further information or secure field service, contact our Field Service Department:

Write: - Henry Pratt Company
401 South Highland Avenue
Aurora, IL 60506-5563

Attn: Field Service Manager

Call - (630) 844-4163

Fax - (630) 844-4160

Please include the following with your inquiry for service:

Henry Pratt Order Number:

Henry Pratt Item Number:

Valve Serial Number:

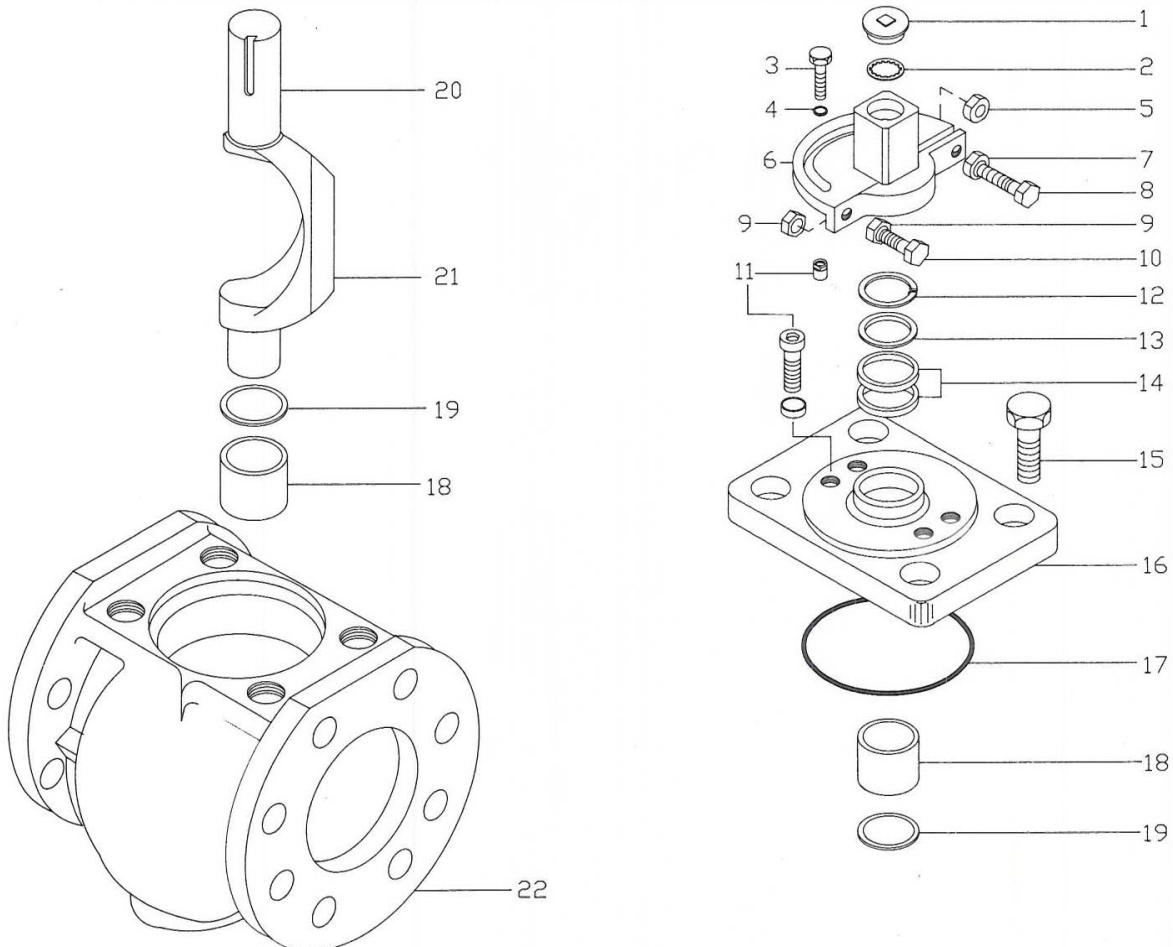
Type of Service Requested

Henry Pratt Ballcentric Plug Valve

2"-12" Ballcentric Plug Valve Parts and Materials

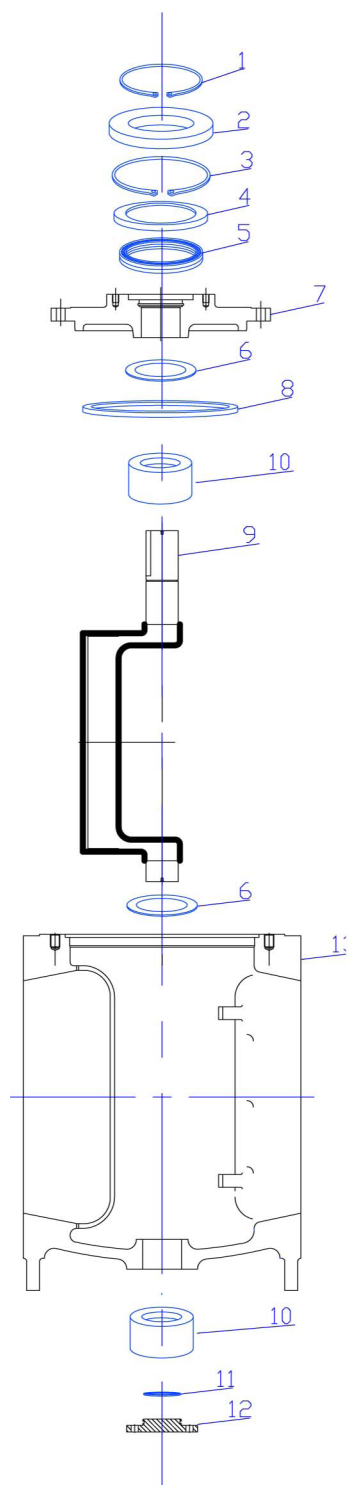
MATERIALS OF CONSTRUCTION

Item	Component	Material	Specification	Item	Component	Material	Specification
1	Indicator Cap	Plastic		12	Snap Ring	Spring Steel	
2	Star Nut	Steel		13	Washer	Brass	ASTM B-138-675
3	Open Stop	Steel		14	U-Cup Seal	Elastomer	Same as Plug
4	Washer	Steel		15	Capscrew	Steel	
5	Nut	Steel		16	Bonnet	Cast Iron	ASTM A-126 Class B
6	Torque Collar	Ductile Iron	ASTM A-536	17	"O" Ring	Elastomer	Same as Plug
7	Lock Nut	Steel		18	Journal Bearing	Stainless Steel	ANSI 316
8	Torque Bolt	Steel		19	Thrust Washer	PTFE	
9	Lock Nut	Steel		20	Plug	Ductile Iron	ASTM A-536 Grade 65-45-12
10	Closed Stop	Steel		21	Plug Coating	Elastomer	As Specified
11	Travel Stop			22	Body	Cast Iron	ASTM A-126 Class B



Henry Pratt Ballcentric Plug Valve

14"-36" Ballcentric Plug Valve Parts and Materials



*NOTE 1: SEAL RETAINING RING: BRASS ON 14"- 20"
STEEL ON 24"- 42"

*NOTE 2: PLUGS: DUCTILE ON 14"- 20"
CAST IRON ON 24"- 42"

13	1	BODY	CAST IRON
12	1	BOTTOM CAP	CAST IRON
11	1	BOTTOM "O" RING	BUNA N
10	2	BEARING	BRONZE/SS
9*	1	PLUG	SEE NOTE 2
8	1	CAP "O" RING	BUNA N
7	1	CAP	CAST IRON
6	2	PTFE WASHER	TEFLON
5	2	STEM SEAL	BUNA N
4*	1	SEAL RETAINING RING	SEE NOTE 1
3	1	INTERNAL SNAP RING	SPRING STEEL
2	1	SUPPORT WASHER	STEEL
1	1	EXTERNAL SNAP RING	SPRING STEEL
ITEM	QTY	DESCRIPTION	MATERIAL